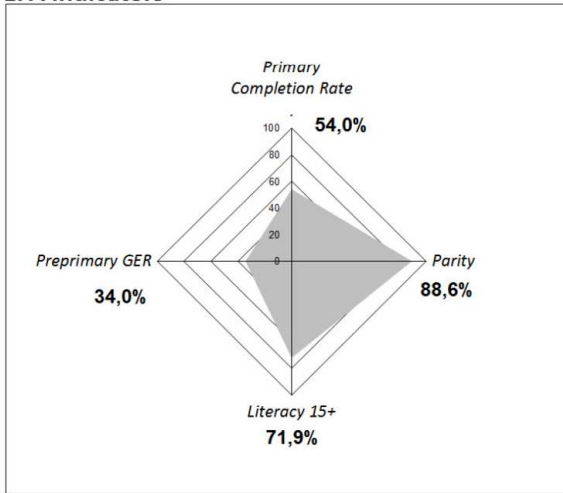


EFA African Development Index	50,2
Reminder 2000	NA

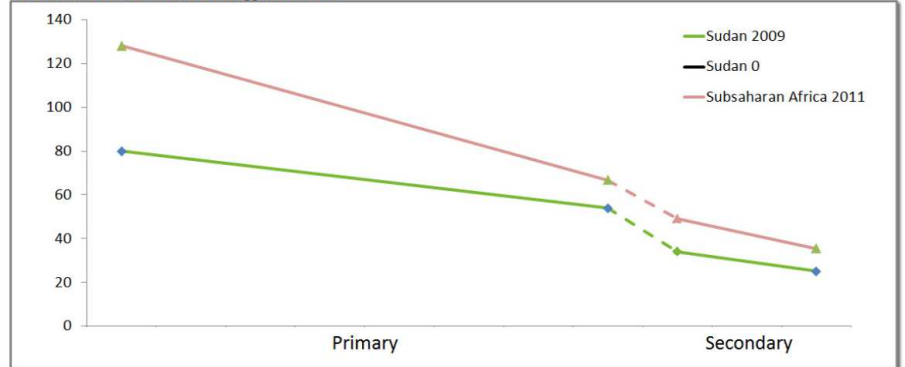
EFA indicators



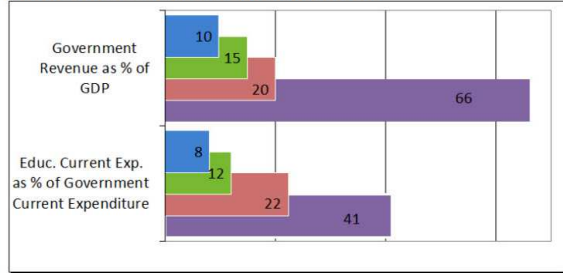
Demographic and Macroeconomic Context (2012)

GDP per Capita (U.S. \$)	1 765
Total population (000)	30 894
% of School Age Population (Primary)	21,8
Out of school rate for children of primary school age (%)	47,5
Adult (15-49) Living with HIV/AIDS	0,4%
HDI (Rank)	171/187

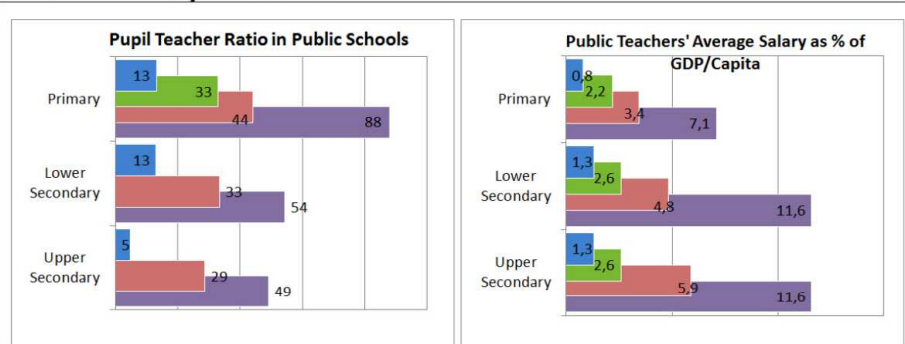
Transversal Schooling Profile



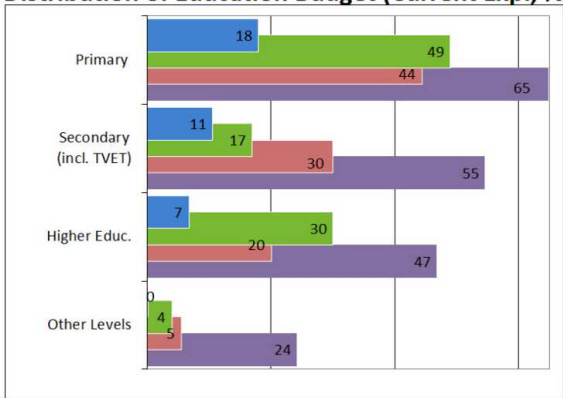
Domestic Resources Mobilisation



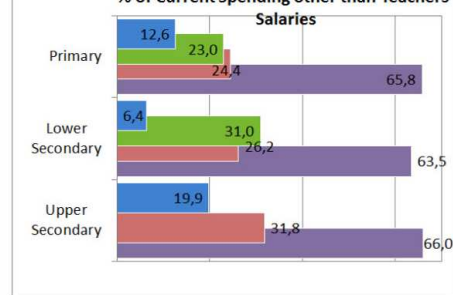
Education Policy Parameters



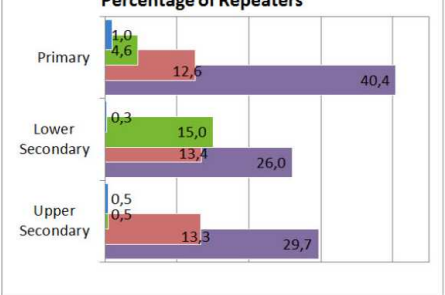
Distribution of Education Budget (Current Exp., %)



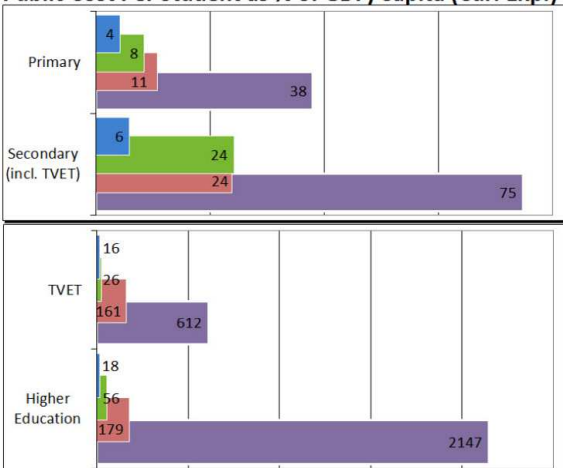
% of Current Spending other than Teachers' Salaries



Percentage of Repeaters



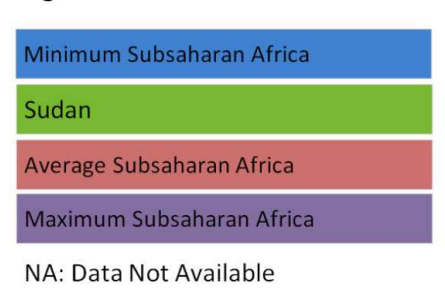
Public Cost Per Student as % of GDP/Capita (Cur. Exp.)



% of Pupils in Private Schools



Legend

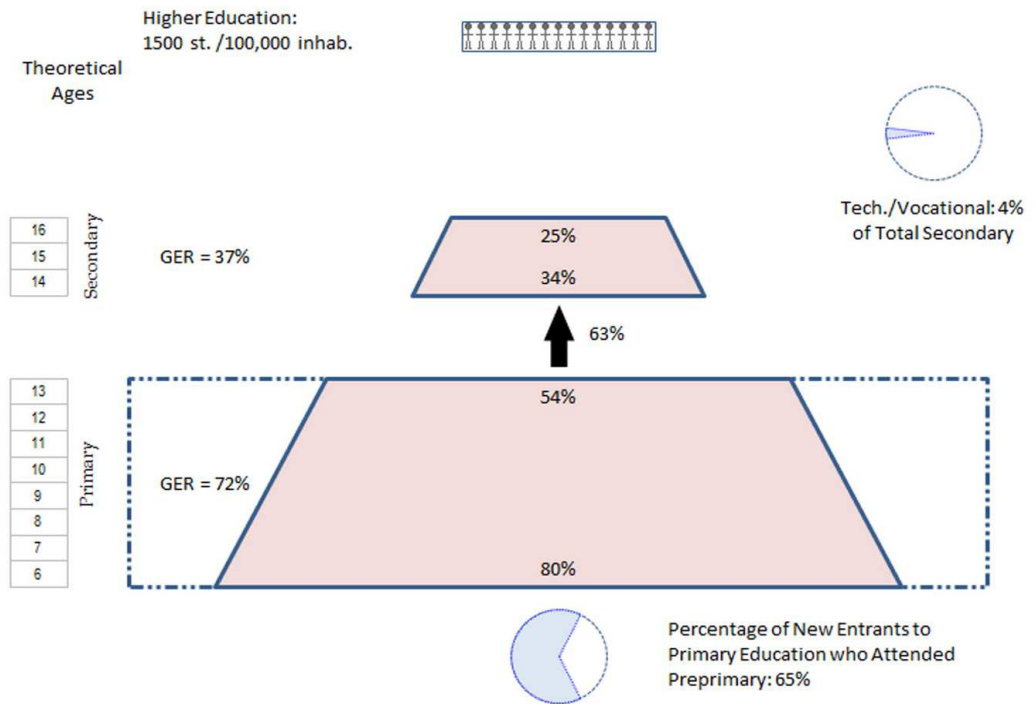


Year of Production of Financial Data

Domestic Resources Mobilisation	2009
Distribution of Education Budget	2009
Public Cost per Student as % of GDP per Capita (Current Exp.)	2009
Teachers' Salaries & other Current Spending	2009

Sources: Pôle de Dakar, UIS, World Bank, United Nations Population Division,UNAIDS,UNDP,IMF

2008-2009



Not enough data to generate the pyramid

Boys

Girls

Not enough data to generate the pyramid

EDUCATIONAL PYRAMID BY WEALTH INDEX (QUINTILE)

Richest Quintile

Poorest Quintile

Not enough data to generate the pyramid